



*The Friends of Holland Park*  
*Spring 2022*





The Friends of  
Holland Park

## Your Committee

**President** Sir Angus Stirling

**Chairman** Jennie Kettlewell

**Secretary** Rhoddy Wood

**Treasurer** Silvi Spassov

**Website** Nicholas Hopkins

**Editor** Joy Puritz

**Park Observer** Andy Walker

**Art Exhibition** Sandra French

**Database Manager** Graham Franklin

**Publicity** Nigel Brockmann

Our website address: [www.thefriendsofhollandpark.org](http://www.thefriendsofhollandpark.org)

Registered as a Charity, No. 281348

### OUR ADVERTISERS

That we are able to produce this quarterly newsletter for members is in no small measure thanks to the continued support of our advertisers. We are most grateful to them, and would ask you to show your thanks by supporting them, please.

Wednesday, 6 April, 7.30 pm in the Holland Park Orangery

It is great to be able to get back together again, to hear what is going on in the park. It is a chance to catch up with each other over a glass of wine and share our experiences.

Be sure to put the date in your diary and come along, with your comments and questions. The formal part is usually over quickly, and we will have time to talk about what has been achieved over the past year and what needs to be done now. The park has been busier than ever during the pandemic, though the main projects have kept going and much has been achieved. But there are still real challenges, and plans are afoot for improvements.

## The Ancora Duo

Friday, 8 April is definitely a date for your diary: keeping all fingers crossed, we look forward to welcoming The Ancora Duo back to the Orangery. Anne Allen (flute) and Sarah Freestone (guitar) will perform the concert they had planned for last April, having thrilled us with their first concert over two years ago. Tickets at £18, to include wine and Janice Miles' delicious canapés, can be ordered on the enclosed order form or via our website.



Often, when it seems things are improving, people do not feel they need to come to the AGM. But please do come, as there are still issues, as there will be with any park. We also need your votes at the meeting to ensure your committee remains in place to carry on the work. Come and challenge us with thoughtful questions and share your ideas. The trustees need your support and want to know that we are representing you.

Members should please register to attend by contacting your chairman on [jennie.kettlewell@thefriendsofhollandpark.org](mailto:jennie.kettlewell@thefriendsofhollandpark.org) or calling 020 7243 0804.

**We look forward to seeing lots of you on 6 April.**

## New Blue Badge Tours

Blue Badge guided tours of Holland Park start again in March, but with a new twist. Due to the opera canopy in summer and conservation works in winter, there is only one week in two years that you will be able to see the front of Holland House: the week commencing 7 March. The big old house will look splendid, as appropriate for a Grade-II-listed building, now that the stone, bricks and mortar have been conserved or replaced. Take the opportunity to see it for yourself and hear the history of the house and the families that lived in it, from our expert Blue Badge guides, Leila and Rowan. There is also a fresh version of the Sculptures, Statues and Art tour, which focuses on more northerly parts of the park. Dates and how to book can be found in the Dates for Your Diary section at the back of this newsletter. Numbers are limited, so book early.



*Members of a local Eritrean women's group enjoying a visit to the park. The event was organised by the Dalgarno Trust and led by The Friends.*

## Trumpet Lawn

You will have noticed that the lawn to the west of the Belvedere Restaurant has been fenced off, and two men from Bartletts Trees have been hard at work aerating the densely compacted soil around the trees. When tree roots are starved of oxygen, they slowly die, as was discovered when the huge Holm Oak at Kew was blown out of the ground by the great storm of October 1987. When popped back in its hole, it thrived, and we all learned that aeration of the roots benefits trees. Vertical mulching round each tree will add valuable nutrients, before *idverde* add a layer of topsoil and seed with grass. The area will be protected with chestnut fencing until the grass is sufficiently robust to withstand all those little feet running about in that area. A *Pyracantha* hedge will be planted along the north railings. The big ash has been cut back to a high monolith, as it was diseased and dangerous, and the intention is to add decorative wood sculpture around the remaining trunk.



*The old dairy*

## Holland House

By the time you read this, the conservation work on Holland House will be all but finished and the site will be formally handed back to the Council on 7 March. Allies & Morrison, the conservation architects, together with Borrás, who carried out the work, gave a presentation to a small group of trustees of The Friends and park management. Who knew that lime mortar was so interesting? Some very clever techniques were used and much of the work, such as the balustrades, was hand-cut detail. Included in the conservation project has been the upper causeway from the house, across the top of the café to The Orangery, and also structural repairs to the old dairy to prevent further water ingress.

## Camellia bed

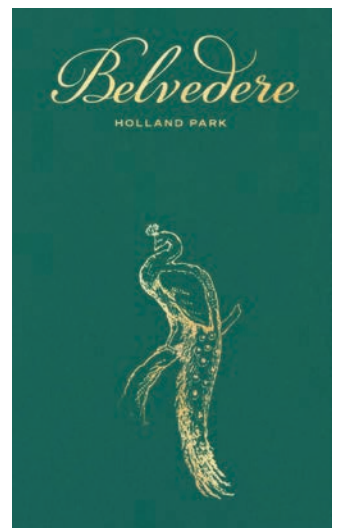


*New railing along the camellia bed*

The historic camellia bed, all along the north side of the old Dutch Garden wall, is looking rather sparse, and new plants are needed. Records show that the bed was in a horrible tangle when the LCC took ownership of the park in 1952. It was cleared out and camellias were planted along the full length of the bed, with many old varieties. When the International Camellia Society visited in March 2018, they were so impressed with our collection that they offered to advise on what we should add in that needy bed. It should look splendid, with some modern camellias, but should also tell the story of the history of camellias in Holland Park. As a start to improving the site, a classic iron railing has been added. That is a hint not to walk on the bed and, as Kew notices say: 'Please don't tread on me, I'm trying to grow!'

## Belvedere

Work on the interior is being meticulously done, with respect to the history of the building. It should look beautiful and be a welcoming environment to enjoy some tasty food for a special occasion, lunch with the family, or just because you are in the park and hungry. The opening is still scheduled for summer 2022. Their new logo for the restaurant will incorporate a peacock and will be similar to this design.





### Café

We have no information from the Council about why the internal improvements to the café have not gone ahead. They were planned years ago, to make operating the café more practical, and to reduce queues. The lease was due to go out for tender some years ago, but has been postponed a year at a time, making it very difficult for the current operator to make the enhancements they would like. We ask the Town Hall, please, to let us all know what is going to happen and when.

### Toilets

The improvements seem to have been in the plan forever. We expected the work to be done last autumn and we have no idea why the Council has not given the okay to start. It is very badly needed, as the toilets are not of a standard expected in a Grade-II-listed park.

## Membership Cards and Subscriptions 2022



If your order form is green it means that at the end of February your membership card expires and you will no longer be able to enjoy the discounts that go with it. To enjoy this benefit, please renew your membership. All subscriptions were due on 1 January except for those who joined after 1 September 2021. If we think you have not yet paid, your order form will be green with a standing order form on the back. We would be grateful if you complete the standing order form, as it means you will not have to remember again, and it helps our treasurer too. Or you can pay using our website [www.thefriendsofhollandpark.org](http://www.thefriendsofhollandpark.org) or post a cheque, payable to The Friends of Holland Park, to Graham Franklin, 19 Campden Hill Gardens, London W8 7AX. Alternatively, you might prefer to pay on our website, [www.thefriendsofhollandpark.org](http://www.thefriendsofhollandpark.org) but it cannot be combined with a standing order. You can however, click on a very obvious yellow button if you want to add a further donation, as some of our members do.

Current minimum rates are £12 or £9 for the over 65s, with joint subscriptions available for two people at the same address for £20 or £15 where both are over 65. You will agree these are

very moderate sums, but we keep them low to enable all to join.

Our records are not infallible, so do contact Graham on 07802 761 548 or [ggfranklin3@aol.com](mailto:ggfranklin3@aol.com) if you have a query.

However you pay, we are most grateful for your support as it gives us clout in all our dealings with the Borough and other bodies.





# Statement of Accounts

## The Friends of Holland Park

Statement of Financial Activities for the year ended 31 December 2021

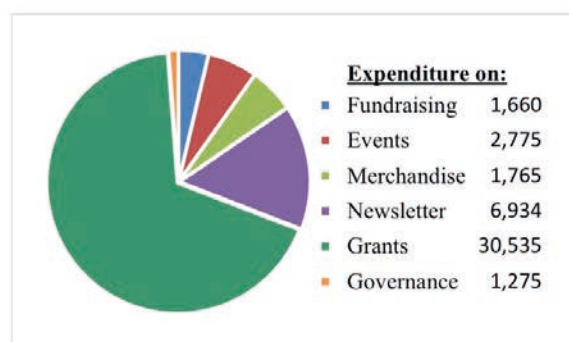
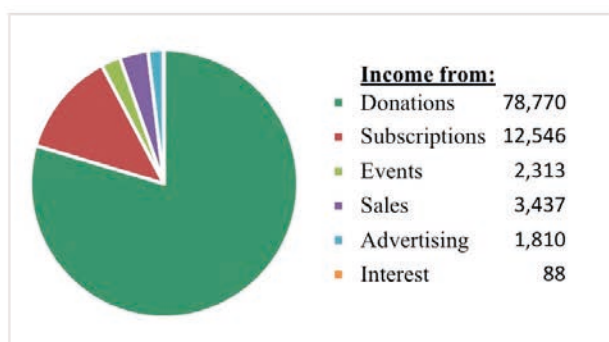
	£	2020 £
<b>Income from:</b>		
<b>Donations and legacies:</b>		
Donations	78,770	39,495
Legacies	-	-
<b>Charitable activities:</b>	12,546	12,856
Subscriptions		
<b>Other trading income:</b>	2,313	1,258
Events		
Sale of merchandise	3,437	2,038
Advertising	1,810	1,811
<b>Interest</b>	88	173
<b>Total incoming resources</b>	<b>98,963</b>	<b>57,631</b>
<b>Expenditure on:</b>		
<b>Raising funds:</b>	1,661	2,279
Fundraising		
Event expenses	2,775	1,676
Cost of merchandise	1,765	516
<b>Charitable activities:</b>		
Newsletter	6,934	7,378
Grants and aims expenditure	30,535	21,378
Governance	1,275	3,023
<b>Total resources expended</b>	<b>44,944</b>	<b>36,251</b>
<b>Net (expenditure)/income</b>	<b>54,020</b>	<b>21,380</b>
Total funds brought forward	153,413	132,033
<b>Total funds carried forward</b>	<b>207,433</b>	<b>153,413</b>

## Balance Sheet as at 31 December 2021

	£	£
<b>Current assets:</b>		
Debtors and prepayments	2,156	262
Deposit and current accounts	206,350	153,232
<b>Creditors:</b>		
Amounts falling due within one year	1,073	81
<b>Net assets</b>	<b>207,433</b>	<b>153,413</b>

Jennie Kettlewell (Chairman)

Date



Dr Alice Laughton brings a wealth of useful experience to Holland Park and the whole borough. Having started with a BSc in Zoology at the University of Edinburgh, she went on to gain a doctorate in Ecological Entomology (study of insects), during which she focused on the immune system of honey bees; that will be appreciated by our Holland Park bees. More academia followed, during which she studied how factors such as environmental temperature, ageing, nutrition and disease affect how animals develop their immune responses.



*Alice Laughton*

She became interested in the importance of communicating science in a way that engaged the public, and she was Chief Scientist on a British Exploring Society expedition to the Amazon rainforest. I think we'd all like to hear more about that.

In 2017, Alice joined The Royal Parks to lead a 5-year project, which combined public engagement with habitat monitoring and conservation works. She says: 'It was a truly collaborative project that involved working with park managers, contractors, wildlife specialists, learning partners and Friends groups.' She introduced conservation grazing to The Green

Park and created wildflower meadows, while developing public community projects, with creative interpretation to increase public awareness.

Alice's experience and interests are good news for Holland Park as the RBKC Biodiversity Action Plan (BAP) goes forward for approval. The BAP is a guide for how we will protect and support wildlife in the borough, and the resources needed to do this. It sits alongside the Green Plan and is linked

with RBKC commitments to climate change and air quality. For the first time, the BAP will focus on the health and wellbeing benefits of access to nature. She is well aware of the increased pressure on our precious parks and the challenges of competing priorities for people and wildlife. The BAP, and associated Woodland Management Plan, will set ambitious targets for protecting, enhancing and expanding habitats for wildlife in Holland Park. That is very good news.

We look forward to getting to know Alice and seeing her get our long-awaited Woodland Management Plan up and running.

## Notes on the Accounts for 2021

2021 was the second of two atypical years due to Covid-19. However, the comparison between 2021 and 2020 is like for like.

- The 2021 accounts have been independently examined.
- Income increased from £57,631 in 2020 to £98,964 in 2021, due to much appreciated donations. This included amounts of £25,000, £35,000 and £10,000, with a wish for the money to be spent on specific projects or types of improvement, as well as many other donations from generous members.
- Event income and costs increased year on year, although low compared to pre-Covid years. We were unable to run most of our events in the Orangery, but did run tours and pop-up stalls with associated income and costs.
- Cost of merchandise, at £1,765, increased due to payment for Holland Park honey, which we sold at a profit.
- Grants to the park, at £30,535, were up from £21,378, which was pleasing, given the restrictions of Covid-19.
- Governance costs were lower than in 2020, as a decision was made not to use an external voting service for the AGM.
- The Gift Aid refund for 2021 was £2,732. Many of the larger donations were from trusts, and not eligible for Gift Aid.
- Net income was £54,020 against £21,380 in 2020. This is due to grant spend delayed until the first quarter of 2022.
- Total funds carried forward stood at £207,433.

Next month we will return to the Orangery and our Exhibition. I cannot wait. As a welcome back we are planning some special additions to our normal presentation, which will provide a lift to the exhibition as well as complementing the art.

I am delighted to announce that our Feature Artist for this year is Annie Leach, a contemporary botanical artist who has been exhibiting with The Friends for many years. Annie's work is often bright and bold. Some of her paintings simply demonstrate the beauty of flowers, fruit, berries and plants, while others explore patterns created by petal leaves and shadows. I know you will enjoy the presentation.

If you have been thinking about entering, do it, there is still time. All artists please remember to have your exhibition forms submitted by FRIDAY, MARCH 4TH.

We hope that you will support The Friends of Holland Park by visiting our exhibition during the nine days in the Orangery, Saturday 2nd to Sunday 10th April. Tell your family, friends and neighbours to come along.

See you in the Orangery.

*Gordon French*

### Art Exhibition 2022 Timetable

Friday, 4 March	Final date for completed artist exhibit details forms to be received to allow catalogue listing
Friday, 1 April	Artists deliver artworks to the Orangery, Holland Park 8.30-11am <i>All artists will be required to sign the catalogue to certify that all details shown are correct</i>
Friday, 1 April	Hanging and judging, 11am – 6pm
Saturday, 2 April	Exhibition open to the public until 10 April. Entry free of charge, 10.30am – 6pm
Sunday, 10 April	Artists and buyers collect works, 6-7pm
Monday, 11 April	Artists and buyers collect works, 9-11am
<i>Artists are particularly asked NOT TO COLLECT THEIR WORKS BEFORE 6pm on SUNDAY 10 April</i>	



*The cover photo of a grey heron perched on Sibirica was taken by your editor on 19 March 2021*

### Parks Police

The Parks Police work hard to keep us all safe. Sometimes we need to help them. Notice boards at park entrances show the current time the park gates are locked for the night. If you are in the park late in the day, please check the hour of closing and be sure to leave the park in time. Occasionally people get locked in the park, because it has not occurred to them to check, and then the police get called to let them out. That is not a good use of police time.

Holland Park is generally a safe place, but we should never be complacent. If you see any antisocial behaviour, such as vandalism, please contact the Parks Police on:

**0300 3655 101**

Remember three key points:

- Keep yourself out of danger
- Take a description of the person, location and exactly what they are doing
- Contact the Parks Police and report **the facts**.



Those involved with Holland Park, whether visitors or businesses operating in the park, should be working actively to plan out waste; then waste will not need to be collected and dealt with.

The most visible problem is litter left by park visitors, who should be encouraged to bring less packaging with their sandwiches and picnics. The bins overflow on busy days, giving the *idverde* team hours of work emptying bins and picking up litter, which thoughtless people have not even bothered to put in a bin. Should we consider one of the new types of 'clever' litter bin, which compacts litter, or at least stops the greedy squirrels and crows from raiding the bins and throwing the contents around? We also need to know more about what happens to the litter collected from all parts of the park and put into skips in the Nursery Yard. Is it all separated out as it should be?

*idverde*'s new contract sets out an ambitious 'sustainability' plan. Dominic Knowler, *idverde*'s Sustainability Programme Manager, told me that they are committed to phasing out single-use plastics, which is a challenge in the horticulture industry. They are carrying out an audit of materials and resources throughout the business, to create a profile of plastics and packaging materials. Waste will be identified by supplier and with its current destination, in order to plan improvement. This might include alternative products, new suppliers, or working with current suppliers to reduce or return packing. The goal is to reduce waste going into landfill. It is a tough task, but they will work with



*No plastic bags for idverde's compost as it is all produced in the park*

the Council and other partners to learn and improve as they go.

The businesses in the park are already reducing single-use plastics. Holland Park Café, run by Cooks & Partners, use paper straws, recyclable paper cups and plates. Crockery has yet to return post Covid-19. They have reduced food waste by making smaller quantities of some food items.

Opera Holland Park has not only banned single-use bottles, straws and cups, but uses reclaimed wood and upcycled or repurposed materials in the theatre. Sets and props are shared or recycled when possible, and they have met their target of 100% LED lights. In terms of carbon reduction, when you buy a ticket, you are encouraged to use public transport. The opera's full sustainability policy is on their website.

There are two water fountains in Holland Park, intended to reduce the number of people who bring single-use plastic water bottles.

Tim Marlow, Director of The Design Museum, says: 'Design has helped create the waste problem, and will be crucial in solving it.' The Museum's recent 'Waste Age' exhibition explores how what is thrown away can be transformed into fresh resources, and how design can help usher in a new age where there is no such thing as waste. The museum is running a one-day introductory workshop on reduction of carbon emissions on 22 March. Details can be found on <https://designmuseum.org>



*Three garments from Stella McCartney demonstrating a circular approach to fashion design, including: ECONYL® Jacket and Trousers, Stella McCartney, Summer 2019 Collection (left); No Waste Dress, Stella McCartney, Spring 2021 Collection (middle); KOBA® Coat and Trousers, Stella McCartney, Autumn 2021 Collection.*

Every one of us should do our bit to help.

*Jennie Kettlewell*

# Hi there **kids!**

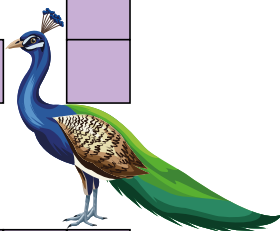
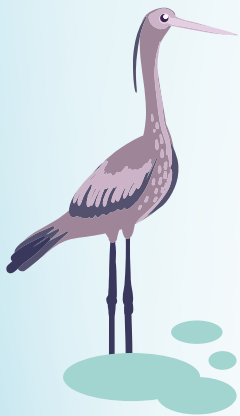
This page is for you, with fabulous things to discover about Holland Park and fun activities to do.



## Cracking **xword**

Test your knowledge of Holland Park's wildlife by having a go at our fantastic crossword.

**xword**



Omar owl helps you discover interesting things in the park

See if you can find this scary face on a big piece of stone outside The Orangery. It was once part of a fountain that stood in front of Holland House. Now it is used for keeping delivery vans from driving on the grass!



**KEEP OFF THE GRASS!**

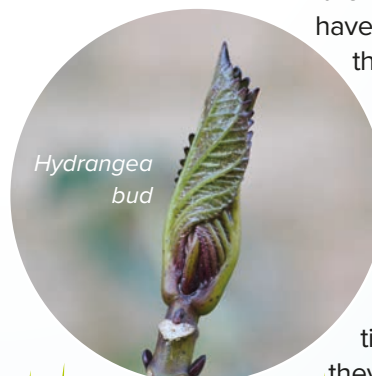
### Across

3. Tadpole when it's grown up
5. Cheeky grey mammal with a bushy tail
7. This one is waiting to grow into a frog
8. Bird with black feathers that makes a sound like CAW
9. Elegant bird that watches out for fish and frogs for it's dinner

### Down

1. Little grey mammal that goes 'squeak' and has a long tail
2. Cheery bird with a red breast
4. This bird shows off its fine feathers
5. Buzzes around in a yellow striped outfit
7. Brown speckled bird that eats berries and sings beautifully

## Hey buddy!



Hydrangea bud

In the winter, some trees and bushes have no leaves. They all fell off in the autumn. You can't see the new leaves in winter, but they are all there, hidden inside the buds. These tiny leaves are already complete and the exact shape that they will be in summer, just very, very tiny. They all folded tightly round each other, so they fit into the bud.



First, the bad news. It will not have escaped anyone's notice that a great many trees have been felled in the park over the past few weeks. This is sad to see. Members have asked whether the Council has become 'chain-saw happy'. It might not seem so, but our tree officers hate to fell trees or cut them back. They want trees to flourish and will only cut down if there is fatal disease, or the likelihood of failure near a public path. It is obvious why some trees have been felled when you see the rot in the fallen logs. A good example of that is the tulip tree in the Woodland Ponds Enclosure to the immediate west of the Acer Walk. On other occasions, the reason is not evident. This is usually when the rot has got a hold at the base of the tree. Higher up it might still be healthy, but the base damage could cause the tree to keel over at any time. Many of the birch trees have failed right across London parks, because they do not like the increasing drought. The majority of Holland Park's birches have died, and they are not an appropriate tree for us to plant now.



*Tree surgeon at the top of a tree, silhouetted against the sky*

planting at no cost, as their gift to the park. They have generously agreed to look after these trees for the first two years of their life and will carry out monthly checks. Professional photographer and dendrologist, Tilly Hunter, spent two hours photographing the planting as part of one of her art projects.

Next for planting is *Tilia henryana*, a species of lime we have not so far had in the park. That will go in the bed just west of the tots' playground, where we will be able to enjoy its unusual leaves with long bristly teeth.

We need a small shade tree on the café terrace and will find a suitable species to go in a very large pot. There is room for two large trees, one in each of the Arboreta enclosures. We wait to hear which well-shaped trees of interest can be located in approved nurseries. At the back of the Holland Pond the dead dawn redwood is to be replaced with something pretty. The Dry Garden will look even more beautiful in spring with the addition of a glorious new crab apple tree, *Malus toringo*, 'Brouwers Beauty'.

We need to plant trees for future generations and to replace lost trees. We need to plant faster. There are two areas that we will keep free of trees, and those are a patch in both Arboretum 1 and Arboretum 2. Both areas are designated meadows and are almost the only area in the park where we can develop effective pollinator habitats. Total shade from tree canopies would make that impossible.

Let's keep planting, but it must be right tree, right place.



*Felled trunk of tulip tree showing disease in main trunk*

But there is good news: planting has started. Last November, eight large trees were planted to replace the diseased red horse chestnuts along the north fence of the sports field. Four are Kentucky Coffee Trees (*Gymnocladus dioica*) and four are Southern Nettle Trees.

They have been well spaced to allow them to grow into large trees, with a splendid natural shape. First a borough grave-digger dug the eight planting pits in almost solid clay. Some quickly filled with water, so care had to be taken to ensure the trees were planted in such a way as to avoid them sitting in pools of clay-bound water. Bartlett's, who have carried out much proactive health work on the park's trees, did the



*PC Nick Henry helping to plant one of the sports field trees.*

I had not known I was interested in fungi until I went on two expert-guided walks in November 2021. The first was on the Norfolk coast and the second in Holland Park. The latter walk was led by Dr Mark Spencer, an experienced consultant botanist. He started with a warning: always assume any mushroom is poisonous, unless you have very sound information that it is not. He then managed our expectations by saying he was not sure we would find many mushrooms. But we did. And they were interesting, and beautiful too.

First we looked at Honey fungus (*Armillaria mellea*), on the remaining stump of the Griselinia tree by the gate of the Ice House. All that remained was a squidgy mess of the fungus, but it had been splendid the week before. As it kills a wide range of garden trees and shrubs, it is not popular with gardeners, but this widespread fungus is an important part of our parkland and woodland ecology. By killing older plants, Honey fungus creates opportunities for others and creates habitat diversity: essential for a healthy ecosystem.



*L. Honey Fungus*  
*R. Hoof Fungus*



Next we visited the horse chestnut, just inside the fence, to the south west of the Holland Pond. Most of the upper branches have gone, but the tree has been left, being no danger to the public, and is like a living sculpture, with its decoration of Hoof fungus (*Fomes fomentarius*). The fungus was stone hard on top, but like suede underneath. Like Honey fungus, Hoof fungus is an important parasite that kills trees and then breaks down the decaying wood. In the same area we found many different fungi, as we did in the Wildlife Enclosure. Here are some examples:



*L. to R.*  
*Turkey tail,*  
*Wrinkled peach*  
*and Jelly ear*



We also enjoyed finding Hairy curtain crust (*Stereum hirsuta*), Deer shield (*Pluteus cervinus*), Sulphur tuft (*Hyphotoma fasciculare*), Brittle stem (*Psathyrella piluliformis*), Smoky bracket (*Bjerkandera adusta*), King Alfred's cakes (*Daldinia concentrica*), Clouded funnel (*Clitocybe nebularis*), Tripe fungus (*Auricularia mesenterica*) and other tiny fungi which were worth getting on your knees to examine.

The bit of the mushroom you see is the fruiting body, and the real action is under the ground. Fungi are natural engineers and play a vital role in breaking down dead and decayed matter to create a healthy ecosystem. Now I am really impressed and look forward to the Autumn 2022 Fungi Foray in Holland Park.

Wildlife walks and talks in Holland Park are organized by the RBKC Ecology Service, and most are funded by The Friends of Holland Park so that they are free to attend.

*Text and photos: Jennie Kettlewell*



We are lucky to have tranquil woodlands in Holland Park, not only for the wildlife they attract, but for the mental and physical benefits they bring to us humans. To capture those assets, we need to slow down and focus on what is all around us, so that we get the full benefit. You can jog through the woodlands and get a physical lift, but there is more to be had if you purposefully take in the surroundings and become intensely mindful of the detail.

How exactly do we do that? Well, we are going to find out, because we now have a Nature and Wellbeing Coordinator in the RBKC Ecology Service.

Max Martin joined the Ecology team recently, having grown up in the Devon countryside. He took a degree in geography, which he later taught, but he felt something was missing and discovered it was the link with nature. He also wanted to teach adults as well as children.

He has been running pilot activities, helping adults get the most out of their green environment by being fully aware of sights, sounds and feelings. 'Is this a bit fringe?' I asked, and he countered by explaining that shutting out the worries of the day and enjoying the breeze on your face and the sound of the birds can reduce stress and make you feel more energized. It can also help reduce blood pressure and lower your



*Max Martin*

heart rate, backed by medical research. Worth trying then, especially in these challenging times.

I want to try Max's sound-mapping exercise. What does it feel like when you hear a blackcap singing, a tree being cut down, a fox barking, children shouting and the wind in the tree above you? Max will guide you to capture those feelings on paper, so that the sounds become drawn

shapes; jagged for a harsh sound and soft perhaps for the gentle sound of the breeze. Come along and find out for yourself.



*Example of a sound map*

Dates for 'Mindfulness in Nature' sessions in the park can be found in this newsletter, under Dates for your Diary. Check what is on offer on the Ecology website: <https://www.rbkc.gov.uk/environment/holland-park-ecology-centre/about-holland-park-ecology-centre>

*Jennie Kettlewell*

## Parks Police 30th Anniversary

This photo shows some of our Parks Police team, taken in November 2021, to mark the 30th anniversary of the force. Not all of the team are in the photo as they work on different shifts to provide the cover needed.

We are always grateful for all the Parks Police do to keep our borough parks safe. They tell us their challenges are pretty varied, from lost property to lost children, from sympathetic help for the homeless to calming down spats between visitors. Thank you!



*RBKC Parks Police*



## Local Events Run by Neighbouring Organisations

Spring 2022

### Kensington Gardeners' Club

The club provides a programme of in person and Zoom talks, as well as garden visits.

To book, e-mail [susan.vannoorden@ntlworld.com](mailto:susan.vannoorden@ntlworld.com).

<i>Sat 19 March at 2.30pm</i>	<b>Club Meeting:</b> Jacqueline Aviolet will give a talk on 'The history and propagation of hardy geraniums'. Plant sale to follow. St George's Church, Aubrey Walk, W8 JG. Free to KGC members and £5 for guests.
<i>Tues 5 April at 2.30pm</i>	<b>Zoom lecture:</b> Nancy Stevens will give a talk on Elizabeth Blackwell, who illustrated 'The Curious Herbal' in 1735, based in her time at the Chelsea Physic Garden. Free to members, £5 for guests.
<i>Early April tbc</i>	<b>Garden visit:</b> Capel Manor and Middleton Gardens, Enfield. Coach departs from Notting Hill Gate at 10am. Cost: £38 for KGC members and £45 for guests.
<i>May date tbc</i>	<b>Garden visit:</b> Exbury Garden, Hampshire. Coach and cost as above.

### Opera Holland Park

Further information from [www.operahollandpark.com](http://www.operahollandpark.com)

Tickets will be available by phoning 0300 999 1000

<i>31 May, 3,9,11,15,17,21 &amp; 25 June at 7.30pm</i> <i>Discovery Matinee 19 June at 2pm</i> <i>Young Artists performances 13 &amp; 23 June at 7.30pm</i>	<b>Eugene Onegin</b> by Tchaikovsky
<i>2,4,6,8,10,14,18,22 &amp; 24 June at 7.30pm</i> <i>Discovery Matinee 12 June at 2pm</i>	<b>Carmen</b> by Georges Bizet
<i>21,23,27 &amp; 29 July and 2,4 &amp; 6 August at 7.30pm</i> <i>Discovery Matinee 31 July at 2pm</i>	<b>Margot la Rouge</b> by Frederick Delius/ <b>Le Villi</b> by Giacomo Puccini <i>double bill</i>
<i>22,28, &amp; 30 July and 3,5 August at 7.30pm</i> <i>Discovery Matinee 24 July at 2pm</i>	<b>Little Women</b> by Mark Adamo
<i>9,10,11,12 &amp; 13 August at 7.30pm</i> <i>Discovery Matinee 13 August at 2pm</i>	<b>HMS Pinafore</b> by Gilbert and Sullivan

### The Kensington Society

The usual programme of lectures, talks, walks and visits has been on hold during the pandemic, but plans are being drawn up for 2022 and further information can be found on [www.kensingtonsociety.org/events](http://www.kensingtonsociety.org/events)

### RBKC Active for Life

Full details on [www.rbkc.gov.uk/leisure-and-culture/sports-and-leisure](http://www.rbkc.gov.uk/leisure-and-culture/sports-and-leisure), or ring 020 7938 8182

A varied programme of physical activities in Kensington, from gentle walks to sport.

*Thursdays 10.30-11.30 am.* Meet at the Holland Park Café, then share a leisurely walk in the park.

*Thursdays 3.00-4.00 pm.* Nordic Walking, with guidance for those who have not tried this before. Walking poles provided. Meet by Friends' notice board outside the Stable Yard.

RBKC offer other physical activities such as yoga and tai chi.



## Dates for your Diary: Events in Holland Park



The events listed below are either organized by The Friends (F), or organized by the Ecology Service (ES), most of which are sponsored by The Friends.


Mon 7 Mar	Blue Badge guided tour: The History of Holland Park. F Must book.	2.30-4pm
Fri 11 Mar	Blue Badge guided tour: The History of Holland Park. F Must book.	10.30-noon
Sat 2- 10 April	Art Exhibition (see p.8) in The Orangery. Free to visit. F	
Tues 5 April	Friends' stall in the Café Yard selling plants and merchandise. Children's activity. Free to take part. F	10am-4pm
Wed 6 April	Annual General Meeting in The Orangery. Members only. F Must book. Please register interest in attending on jenniekettlewell@thefriendsofhollandpark.org	7.30pm
Fri 8 April	Ancora Duo concert (see p.3) in The Orangery. F Must book.	7.30pm
Tues 12 April	Blue Badge guided tour: History, sculptures, statues and art in the north of Holland Park. New tour! F Must book.	10.30-noon
Thurs 28 April	Spring botany walk. Must book. ES	6.30-8pm
Weds 4,11,18,25 May	Mindfulness in Nature: course of 4 sessions. £24.80 (£20.40 concessions) for 4 sessions. Must book. ES	6.30-7.30pm
Fri 6 May	Blue Badge guided tour: History, Sculptures, Statues and Art in the north of Holland Park F. New tour! Must book.	10.30-noon
Sat 7 May	Dawn Chorus. Must book. ES	5-7am
Sat 7 May	Family bird song walk. Must book. ES	8-10am
Wed 18 May	Bat walk, evening. Must book. ES	8.30-10am
Thurs 2 June	Friends' stall in the Café Yard selling plants and merchandise. Children's activity. Free to take part. F	10am-4pm
Wed 8 June	Herbal Medicine Walk. ES	6 -8pm
Thurs 16 June	Summer Tree walk – the basics. ES	6.30-8pm
Sun 19 June	Blue Badge guided tour. Must book F	2.30-4.00pm
Sat 25 June	Butterfly and moth walk. Must book ES	10-11.30am

All Ecology Service (ES) events can be booked by emailing [ecology.centre@rbkc.gov.uk](mailto:ecology.centre@rbkc.gov.uk) or calling 020 7938 8186. Unless otherwise instructed when you book, meet at the Ecology Centre, near the Adventure Playground.

The Friends' (F) Blue Badge tours can be booked on our website [www.thefriendsofhollandpark.org](http://www.thefriendsofhollandpark.org), by contacting Jennie Kettlewell on 020 7243 0804/[jennie.kettlewell@thefriendsofhollandpark.org](mailto:jennie.kettlewell@thefriendsofhollandpark.org), or check on Eventbrite. Unless otherwise instructed when you book, meet by The Friends' notice board in the Café Yard.

Tickets for the Ancora Duo concert can also be booked on [www.thefriendsofhollandpark.org](http://www.thefriendsofhollandpark.org), or by contacting Margaret Rhodes on 020 7792 1265 or [thorpemorieux@gmail.com](mailto:thorpemorieux@gmail.com).

Holland Park Conservation Volunteers (adults) meet on the third Saturday of each month from 10.30am to 3.30 pm. Tasks focus on practical conservation that helps deliver the Ecology Service management plan and might include dead-hedging, scything, pond clearing and maintaining the paths in the Wildlife Enclosure. If you want to join, or find out more, please email Gerry Kelsey, idverde's Training and Community Manager, at [Gerald.Kelsey@idverde.co.uk](mailto:Gerald.Kelsey@idverde.co.uk)



Friends of Holland  
Park Household  
Insurance Scheme

**10%**  
discount for  
all members

## Homes like yours need insurance like ours

Lycetts has nearly 60 years' experience of looking after the insurance needs of our clients. We offer specialist, impartial advice on your personal insurance and wealth management requirements, in addition to an extensive range of products and services for estates, farms, equestrian and commercial enterprises.

**Lycetts**  
Insurance Brokers

**0207 398 1660**

**[jonathan.lloyd@lycetts.co.uk](mailto:jonathan.lloyd@lycetts.co.uk)**

**[www.lycetts.co.uk](http://www.lycetts.co.uk)**

Lycetts is a trading name of Lycett, Browne-Swinburne & Douglass Limited which is authorised and regulated by the Financial Conduct Authority.  
Lycetts is a trading name of Lycetts Financial Services Limited which is authorised and regulated by the Financial Conduct Authority.

**Proud to protect your home and your valued possessions**